



# Flight Plan & Site Survey

Created using **RPAS Wilco**®

Reference No:	2AD7A6
Title:	LMAC East London Library
Pilot Name:	
Pilot Certificate:	
Flight Start:	November 19, 2024 10:01 AM
Flight End:	November 19, 2024 12:01 PM
Flight Area (Latitude):	42° 59' 4.10" N ( 42.984 )
Flight Area (Longitude):	81° 14' 46.70" W ( -81.246 )
Altitude - Radius:	<b>Alt:</b> 400 ft - <b>Rad:</b> 926.0 m ( 0.5 nm)
Classification:	CONTROLLED
FIR - Contact:	CZYZ - 905-676-4509

## Notes:

Your flight is in controlled airspace.

If your RPAS is > 250g, please obtain RPAS Flight Authorization using the NavDrone app or by contacting NavCanada. (CARs 901.71)

Please ensure you received all required authorizations prior to flight.

## Disclaimer

This Site Survey was created using RPAS Wilco by AIM Robotics. The flight plan contained is intended only for RPAS flights on the date/time and location specified. The user accepts all responsibility for the accuracy and completeness of the information contained.

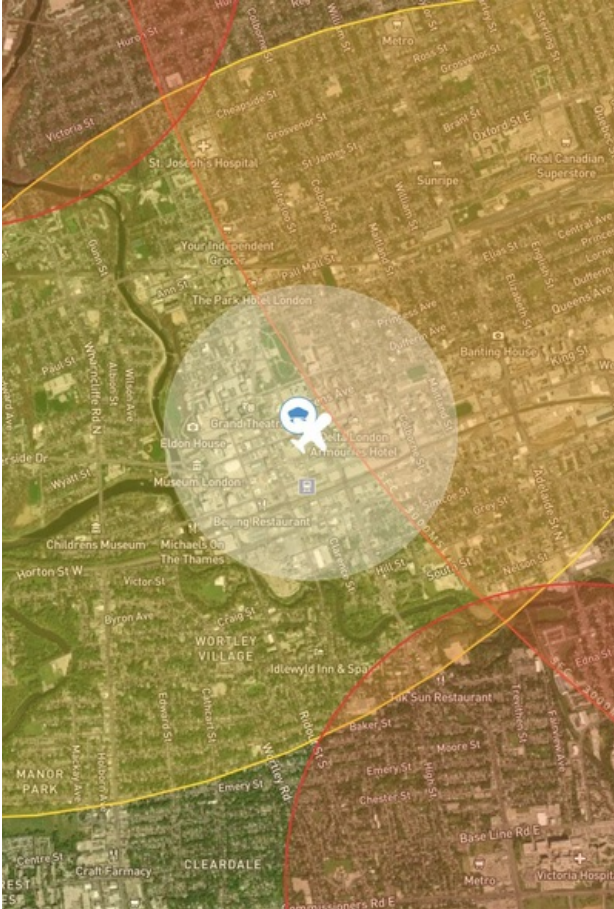
For the complete Terms & Conditions, see

<https://rpswilco.com/#/tnc>

## Included

- Site Survey
- Obstacles (if available)
- Nearby Aerodromes
- Canadian Aviation Regulations
- GFA
- Aerodrome Supplements
  - METAR & TAF (if available)
  - NOTAMs
  - CFS



## Flight Map



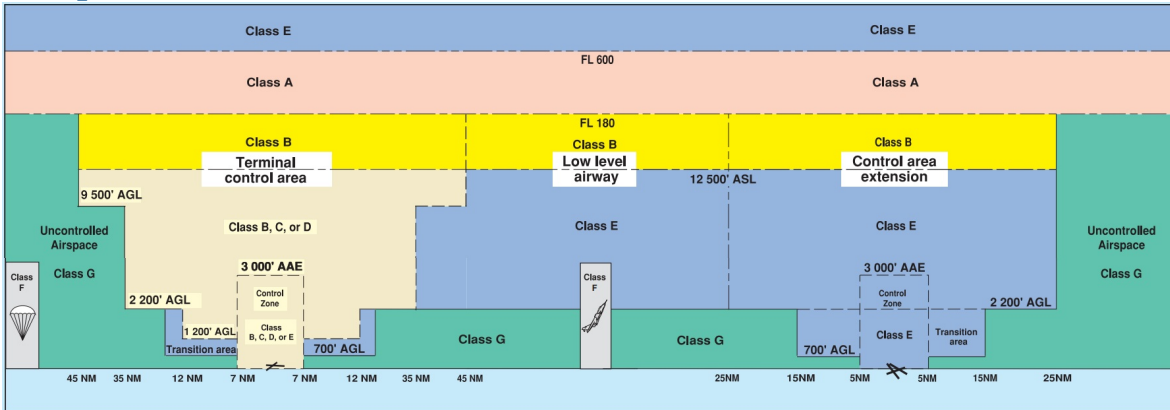
## RPAS Specification

- **Manufacturer:**  
**MAAC**
- **Model:**  
**MODELAIRPLANE**
- **Registration Number:**
- **Eligible for advanced operations:**  
**No**
- **Manufacturer RPAS safety assurance:**
  - **Controlled Airspace:** N/A
  - **Near People:** N/A
  - **Over People:** N/A

## MAP Details

	Latitude	Longitude
 <b>MODEL</b>	42° 59' 4.10" N ( 42.984 )	81° 14' 46.70" W ( -81.246 )
 <b>Pilot</b>	42° 59' 7.70" N ( 42.9855 )	81° 14' 50.30" W ( -81.2473 )

## Airspace Classification



## Overlying Airspaces

Class	Name	Floor	Ceiling
E	London, ON TA	700AGL	12500MSL
B	London, ON TA	12500MSL	18000MSL
E	T608 Airway	2200AGL	12500MSL
B	T608 Airway	12500MSL	18000MSL
E	T781 Airway	2200AGL	12500MSL
B	T781 Airway	12500MSL	18000MSL
C	London CZ	SFC	3000MSL
E	T614 Airway	2200AGL	12500MSL
B	T614 Airway	12500MSL	18000MSL
E	Southern Ontario Low Level Control Area CAE	2500MSL	6500MSL
E	Southern Ontario Low Level Control Area CAE	6500MSL	12500MSL
B	Southern Ontario Low Level Control Area CAE	12500MSL	18000MSL

## Nearest Aerodromes & Distance from Operation

LONDON (VICTORIA HOSPITAL) (CPW2 - HELIPORT - Cert)	Lat: 42.959 Long: -81.226	3.279KM	1.77NM	SE
LONDON (UNIVERSITY HOSPITAL) (CPR4 - HELIPORT - Cert)	Lat: 43.013 Long: -81.274	3.89KM	2.1NM	NW
LONDON (CYXU - AERODROME - Cert)	Lat: 43.033 Long: -81.151	9.443KM	5.1NM	NE
LONDON (PIONEER AIRPARK) (CPN8 - AERODROME - Reg)	Lat: 43.098 Long: -81.234	12.663KM	6.84NM	N
WATSON AIRFIELD (CLW4 - AERODROME - Reg)	Lat: 43.106 Long: -81.239	13.526KM	7.3NM	N

## ONTARIO

## AERODROME/FACILITY DIRECTORY

## LONDON (VICTORIA HOSP) ON (Heli)

CPW2

<b>REF</b>	N42 57 33 W81 13 32 Adj 9°W UTC-5(4) Elev 875' A5000	
<b>OPR</b>	Victoria Hosp Corp 519-685-8500 Cert PPR	
<b>FLT PLN</b>	<b>FIC</b> London 866-WXBRIEF (Toll free within Canada) or 866-541-4104 (Toll free within Canada & USA)	
<b>HELI DATA</b>	86' dia ASPH 114' dia Max heli overall length 57.5'	
<b>LIGHTING</b>	DR RY(LO) RF(FL)	
<b>COMM</b>	<b>A/G</b> Ambulance dispatch 129.275	
<b>PRO</b>	Two arr/dep paths brg 141° & 241° fr heli, slope 8% (H3), day/night use VFR only.	

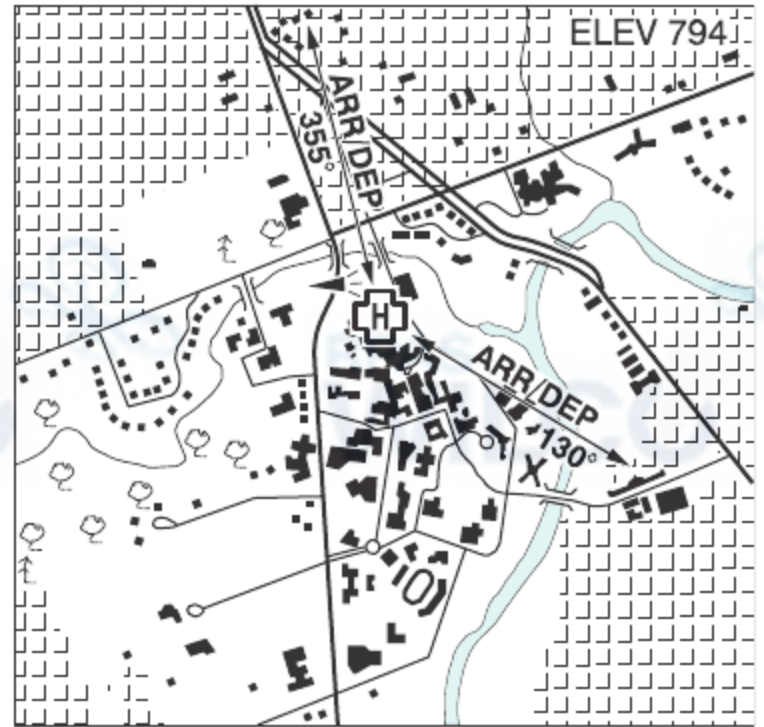
## ONTARIO

## AERODROME/FACILITY DIRECTORY

## LONDON (UNIVERSITY HOSP) ON (Heli)

CPR4

<b>REF</b>	N43 00 47 W81 16 28 Adj 9°W UTC-5(4) Elev 794' A5000
<b>OPR</b>	London University Hosp 519-685-8500 Cert PPR
<b>FLT PLN</b>	<b>FIC</b> London 519-452-4040 or London 866-WXBRIEF (Toll free within Canada) or 866-541-4104 (Toll free within Canada & USA)
<b>HELI DATA</b>	FATO 82' dia CONC/GRASS TLOF 50' dia CONC Safety Area 109' dia Max heli overall length 54.7' 15,430 lbs <b>RCR</b> Opr
<b>LIGHTING</b>	DR RW(LO) blue RF(FL) amber
<b>PRO</b>	Arr/dep 355° & 130° fr heli (H1).



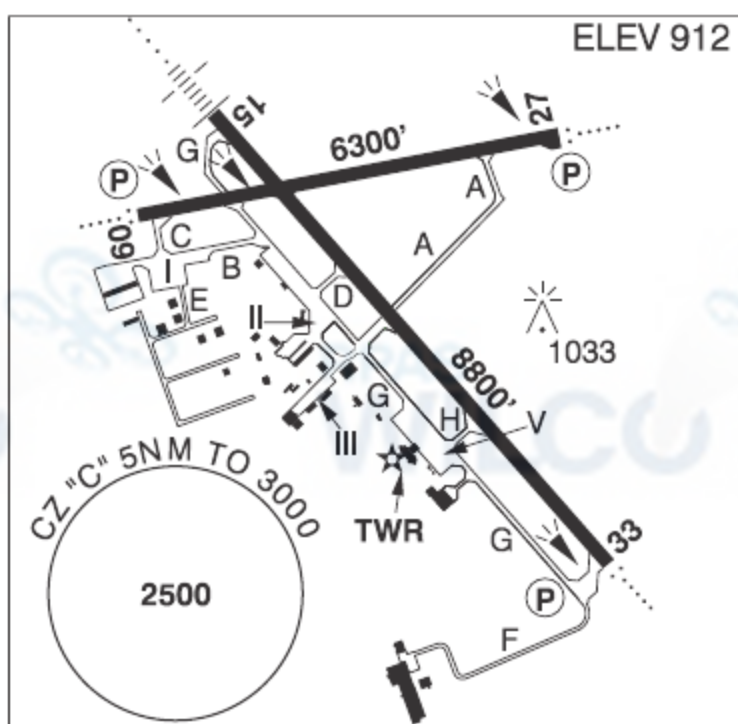
**ONTARIO**

**AERODROME/FACILITY DIRECTORY**

**LONDON ON**

**CYXU**

<b>REF</b>	N43 01 59 W81 09 04 5NE 9°W UTC-5(4) Elev 912' A5000 LO6 HI5 CAP
<b>OPR</b>	Greater London International Airport Authority 519-452-4015 Cert
<b>PF</b>	A-1,2,3,6 avbl 11-04Z‡ B-1,2,3 C-4,5,6
<b>CUST</b>	AOE/180 888-226-7277 13-05Z‡ May 01-Oct 31; H24 Nov 1-Apr 30 PN prior to 2145Z‡ MEDEVAC & organ transplants, pilots call 519-451-6079 on ldg.
<b>FLT PLN</b>	Pilots to open/close VFR flt pln with London rdo 123.55 or by phone
<b>FIC</b>	London 866-WXBRIEF (Toll free within Canada) or 866-541-4104 (Toll free within Canada & USA) or 519-452-4040
<b>WX</b>	METAR H24 TAF H24, issue times: 00, 06, 12, 18Z.



<b>SERVICES</b>	
<b>FUEL</b>	100LL, JA-1 (FSII avbl), F-34
<b>OIL</b>	65, 80, 100
<b>S</b>	1,2,3,4,5
<b>ARFF</b>	DESIGNATED CAT 7 (CAT 5 non-sked) 10-04Z‡, O/T call out chg. PPR for acft 20 seats & abv, exc for diversions or as an altn A/D, ctc 519-452-4000 for current ops.
<b>SUP FL</b>	LHOX, D & A-ice
<b>JASU</b>	CE13,15
<b>PVT ADV</b>	Executive Aviation Fuels Ltd 122.95 519-453-5370 10-01Z‡ O/T call out chg apply; Flite Line Services 130.5 519-451-0210 11-01Z‡ O/T call out chg apply
<b>MIL CON</b>	Flite Line Services London 519-451-0210

<b>RWY DATA</b>	Rwy 15(148°)/33(328°) 8800x200 ASPH Rwy 09(088°)/27(268°) 6300x200 ASPH
<b>RWY CERT</b>	Rwy 15 RVR 1200(1/4sm)/Rwy 33 RVR 1200(1/4sm) AGN V Rwy 09/27 AGN V
<b>TWY CERT</b>	Twy: B, D, G, H AGN IIIB Twy: E, F AGN II
<b>TWY</b>	Twys B, C, E & F uncontrolled
<b>RCR</b>	Opr 10-04Z‡ O/T 2 hrs PN CRFI, PLR/PCN

<b>LIGHTING</b>	09-AO(TE ME) P2, 27-AO(TE ME) P2, 15-AN(TE HI), 33-AO(TE HI) P2 ARCAL-119.4 type K (when twr closed)
-----------------	---

<b>COMM</b>	
<b>RCO</b>	Sudbury rdo 119.4 PTC avbl (RAAS) 0345-1120‡ London rdo 123.55 (FISE) 126.7 (bcst) (E)
<b>ATIS</b>	127.8 1120-0345Z‡
<b>GND</b>	121.9 1120-0345Z‡
<b>TWR</b>	119.4 125.65 (E) 1120-0345Z‡ (emerg only 519-451-9610)
<b>MF</b>	Sudbury rdo 119.4 0345-1120Z‡ 5NM 3000 ASL (CAR 602.98)
<b>PAL</b>	Toronto Ctr 135.3 135.625

<b>NAV</b>	
<b>VOR/DME</b>	YXU 117.2 Ch 119 N43 02 16 W81 08 56 (920')
<b>ILS</b>	IXU 109.5 (Rwy 15) RVR LOC reliable only within 10° either side of centreline.

## ONTARIO

## AERODROME/FACILITY DIRECTORY

## LONDON ON (Cont'd)

CYXU

<b>PRO</b>	Rgt hand circuits Rwy 33 & 09 (CAR 602.96). Circuit hgt 1900 ASL all rwy. IFR training flts are to ctc National Traffic Management Unit (FLOW CTL) 800-268-4831 within 2 hrs of ETD for possible delays. Acft on Apron V ctc GND prior to pushback. During RAAS ops, bcst intentions on MF prior to pushback.
<b>CAUTION</b>	Migratory birds in vic of aprt Sep-May. Glider activity in the vic of London Soaring Club (aprx 11NM ENE of A/D) and of London (Pioneer Airpark) (aprx 5NM NNW of A/D), 6000 ASL and below.

## ONTARIO

## AERODROME/FACILITY DIRECTORY

## LONDON (PIONEER AIRPARK) ON

CPN8

<b>REF</b>	N43 05 53 W81 14 04 6.7NNE 9°W (2016) UTC-5(4) ELEV 980' A5000	
<b>OPR</b>	Karl Pfister 519-951-7932 Reg	
<b>PF</b>	B-1 C-2,3,4,5,6	
<b>FLT PLN</b>		
<b>FIC</b>	London 866-WXBRIEF (Toll free within Canada) or 866-541-4104 (Toll free within Canada & USA)	
<b>RWY DATA</b>	Rwy 17(166°)/35(346°) 2090x80 GRASS Rwy 08(078°)/26(258°) 1986x125 GRASS	
<b>RCR</b>	Opr No win maint	
<b>COMM</b>		
<b>MF</b>	Sudbury rdo 119.4 0345-1120Z† 5NM centered on London A/D 5NM SE 3000 ASL (CAR 602.98)	
<b>PRO</b>	Right hand circuit on Rwy 17 & 26 (CAR 602.96). All circuits 2000 ASL. Do not overfly pig barn E and horse barn NW of aprt. Ctc London twr 119.4 prior to entering CZ and for extended circuit and above 2000 ASL in the London apch path. If equipped, establish radio ctc with London twr.	
<b>CAUTION</b>	P-lines aprx 60 AGL end Rwy 26. Trees adj to all thresholds. Possible deer on rwy. Possible high vegetation at all thresholds. High density tfc from adj airstrips.	



## ONTARIO

## AERODROME/FACILITY DIRECTORY

## LONDON / WATSON AIRFIELD ON

CLW4

<b>REF</b>	N43 06 21 W081 14 22 7.1N 9°W (2017) UTC-5(4) Elev 935' A5000	
<b>OPR</b>	John Watson 519-453-2579 Reg PPR	
<b>PF</b>	D-1,2,3,4,5,6,7,8	
<b>FLT PLN</b>		
<b>FIC</b>	London 866-WXBRIEF (Toll free within Canada) or 866-541-4104 (Toll free within Canada & USA)	
<b>RWY DATA</b>	Rwy 08(078°)/26(258°) 1890x80 GRASS	
<b>RCR</b>	Opr No win maint	
<b>COMM</b>		
<b>ATF</b>	tfc 123.2 5NM 4000 ASL excluding CYXU class "C" CZ	
<b>PRO</b>	Right hand circuit Rwy 26 (CAR 602.96)	
<b>CAUTION</b>	Trees on apch to Rwy 08. Hangar aprx 400' ENE of Rwy 08. Avoid farm bldgs. London (Pioneer Airpark) A/D 0.5NM SSE.	

# Canadian Aviation Regulations

## Division III — General Operating and Flight Rules

For full listing please visit : <https://laws-lois.justice.gc.ca/eng/regulations/SOR-96-433/FullText.html#s-901.27>

### Visual Line-of-sight

- **901.11 (1)** Subject to subsection (2), no pilot shall operate a remotely piloted aircraft system unless the pilot or a visual observer has the aircraft in visual line-of-sight at all times during flight.
- **(2)** A pilot may operate a remotely piloted aircraft system without the pilot or a visual observer having the aircraft in visual line-of-sight if the operation is conducted in accordance with a special flight operations certificate — RPAS issued under section 903.03.

### Procedures

- **901.23 (1)** No pilot shall operate a remotely piloted aircraft system unless the following procedures are established:
  - **(a)** normal operating procedures, including pre-flight, take-off, launch, approach, landing and recovery procedures; and
  - **(b)** emergency procedures, including with respect to
    - **(i)** a control station failure,
    - **(ii)** an equipment failure,
    - **(iii)** a failure of the remotely piloted aircraft,
    - **(iv)** a loss of the command and control link,
    - **(v)** a fly-away, and
    - **(vi)** flight termination.
- **(2)** If the manufacturer of the remotely piloted aircraft system provides instructions with respect to the topics referred to in paragraphs (1)(a) and (b), the procedures established under subsection (1) shall reflect those instructions.
- **(3)** No pilot shall conduct the take-off or launch of a remotely piloted aircraft unless the procedures referred to in subsection (1) are reviewed before the flight by, and are immediately available to, each crew member.
- **(4)** No pilot shall operate a remotely piloted aircraft system unless the operation is conducted in accordance with the procedures referred to in subsection (1).

### Site Survey

**901.27** No pilot shall operate a remotely piloted aircraft system unless, before commencing operations, they determine that the site for take-off, launch, landing or recovery is suitable for the proposed operation by conducting a site survey that takes into account the following factors:

- **(a)** the boundaries of the area of operation;
- **(b)** the type of airspace and the applicable regulatory requirements;
- **(c)** the altitudes and routes to be used on the approach to and departure from the area of operation;
- **(d)** the proximity of manned aircraft operations;
- **(e)** the proximity of aerodromes, airports and heliports;
- **(f)** the location and height of obstacles, including wires, masts, buildings, cell phone towers and wind turbines;
- **(g)** the predominant weather and environmental conditions for the area of operation; and
- **(h)** the horizontal distances from persons not involved in the operation.

### Operations at or in the Vicinity of an Aerodrome, Airport or Heliport

- **901.47 (1)** No pilot shall operate a remotely piloted aircraft at or near an aerodrome that is listed in the *Canada Flight Supplement* or the *Water Aerodrome Supplement* in a manner that could interfere with an aircraft operating in the established traffic pattern.
- **(2)** Subject to section 901.73, no pilot shall operate a remotely piloted aircraft at a distance of less than
  - **(a)** three nautical miles from the centre of an airport; and
  - **(b)** one nautical mile from the centre of a heliport.
- **(3)** No pilot shall operate a remotely piloted aircraft at a distance of less than three nautical miles from the centre of an aerodrome operated under the authority of the Minister of National Defence unless the operation is conducted in accordance with a special flight operations certificate — RPAS issued under section 903.03.

### Records

- **901.48 (1)** Every owner of a remotely piloted aircraft system shall keep the following records:
  - **(a)** a record containing the names of the pilots and other crew members who are involved in each flight and, in respect of the system, the time of each flight or series of flights; and
  - **(b)** a record containing the particulars of any mandatory action and any other maintenance action, modification or repair performed on the system, including
    - **(i)** the names of the persons who performed them,
    - **(ii)** the dates they were undertaken,
    - **(iii)** in the case of a modification, the manufacturer, model and a description of the part or equipment installed to modify the system, and
    - **(iv)** if applicable, any instructions provided to complete the work.
- **(2)** Every owner of a remotely piloted aircraft system shall ensure that the records referred to in subsection (1) are made available to the Minister on request and are retained for a period of
  - **(a)** in the case of the records referred to in paragraph (1)(a), 12 months after the day on which they are created; and
  - **(b)** in the case of the records referred to in paragraph (1)(b), 24 months after the day on which they are created.
- **(3)** Every owner of a remotely piloted aircraft system who transfers ownership of the system to another person shall, at the time of transfer, also deliver to that person all of the records referred to in paragraph (1)(b).